

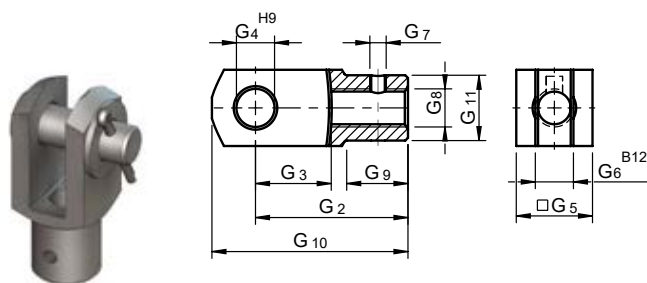
Accessories

Fork end GA

Screwed onto the mounting thread of the travelling screw and protected against rotation. Supplied with split pins and collar pins. Galvanized.

Standard: Pin mounted parallel to the drive shaft.

Note: Please specify alignment at version V.



Dimensions [mm]

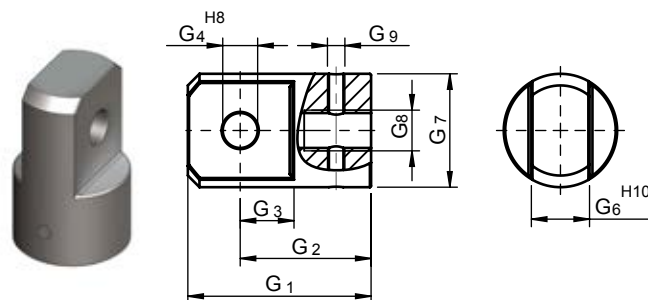
	G ₂	G ₃	G ₄	G ₅	G ₆	G ₇	G ₈	G ₉	G ₁₀	G ₁₁
GA MULI 0	32	16	8	16	8	M4	M8	12	42	14
GA MULI 1	48	24	12	24	12	M5	M12	18	62	20
GA MULI 2	56	28	14	28	14	M6	M14	22	72	24,5
GA MULI 3	80	40	20	40	20	M8	M20	30	105	34
GA MULI 4	120	60	30	60	30	M8	M30	43	160	52
GA MULI 5	144	72	35	70	35	M10	M36	54	188	60

Clevis end GK

Screwed onto the mounting thread of the jack screw and protected against rotation.

Standard: Clevis hole parallel to the drive shaft.

Note: Please specify alignment at version V.



Dimensions [mm]

	G ₁	G ₂	G ₃	G ₄	G ₆	G ₇	G ₈	G ₉
GK MULI 0	40	30	20	10	12	25	M8	M4
GK MULI 1	55	40	15	10	15	30	M12	M5
GK MULI 2	63	45	18	12	20	39	M14	M6
GK MULI 3	78	53	20	16	30	45	M20	M8
GK MULI 4	100	70	30	20	35	60	M30	M8
GK MULI 5	130	97	33	22	40	85	M36	M10
GK JUMBO 1	120	75	45	40	60	90	M48x2	M10
GK JUMBO 2	130	90	50	50	70	105	M56x2	M12
GK JUMBO 3	155	105	60	60	80	120	M64x3	M12
GK JUMBO 4	220	135	85	80	110	145	M72x3	M12
GK JUMBO 5	300	200	100	90	120	170	M100x3	M12

Spherical clevis ends KGK upon request